

Subplates with Integral Relief Valves

SPRV Series subplates provide easy transition from standard N.F.P.A. and special Dynex high pressure or high flow mounting patterns to common hydraulic connections. Each includes an integrated, adjustable relief valve for circuit protection.

VALVE OPERATION

Basic Functions

Relief valves are normally closed controls that regulate pressure to a desired preset maximum. Their most common use is to protect against excessive system pressure.

Valve Adjustments

Pressure is preset by turning an internal hex socket adjustment *clockwise* to increase pressure.

MOUNTING BOLTS

These subplates include mounting bolts for one directional control valve. When ordering valves and subplates together, the valves are not mounted.

SPRV SERIES
For D03, D05, D05H, D08, HP03, Series
Directional Control Valves



HP03 Subplate with Integral Relief Valve.

Selection Table

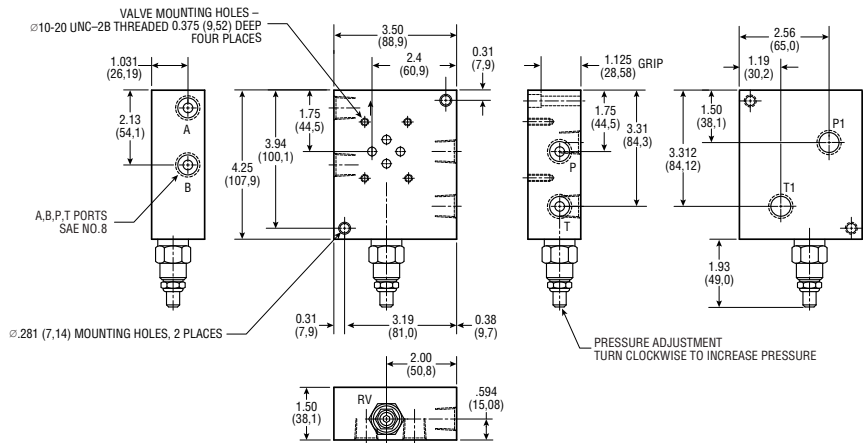
Part Number	Valve Mounting Pattern	Rated Pressure	
		psi	bar
SPRV-D03-SAE8	D03	5000	345
SPRV-HP03-.56MP	HP03	10 000	700
SPRV-D05-SAE8	D05	5000	345
SPRV-D05H-SAE12	D05H	5000	345
SPRV-D08-SAE16	D08	5000	345

INSTALLATION & DIMENSIONS

Installation drawing dimensions are shown in inches (millimeters in parentheses) and are nominal.

D03 Subplate with Relief Valve

Part Number	Max Pressure	Description
SPRV-D03-SAE8	5000 PSI (345 Bar)	Side A,B,P,T Ports: SAE No. 8 Bottom P1,T1 Ports: SAE No. 8

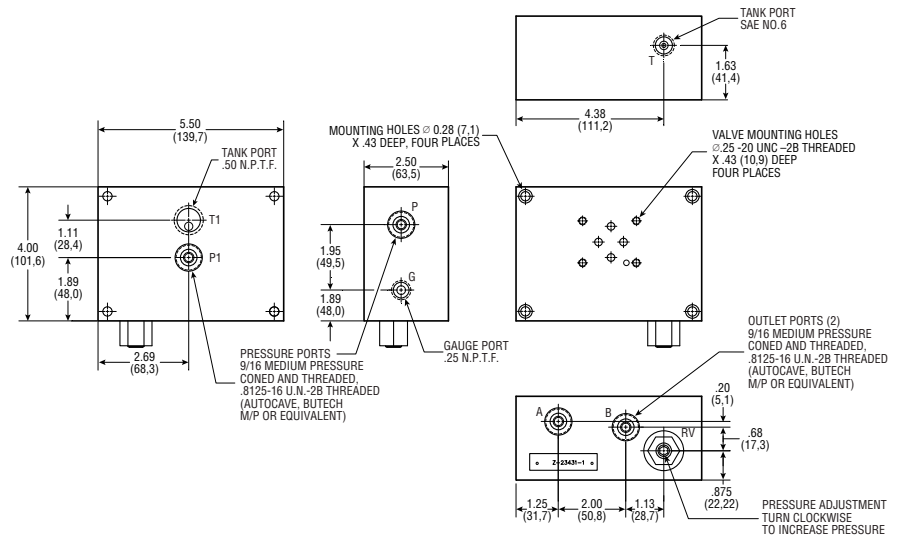


D03 Subplate with Relief Valve

HP03 Subplate with Relief Valve

Part Number	Max Pressure	Description
SPRV-HP03-.56MP	10000 PSI (700 Bar)	A,B,P,(P1) Ports: 9/16 Medium Pressure Coned and Threaded ^① Side T Port: SAE No. 6 Bottom T1 Port: .50 N.P.T.F.

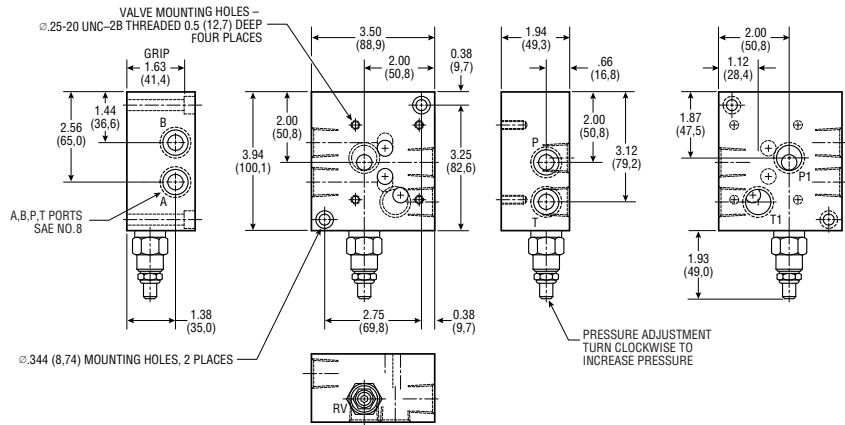
^① "P" ports use Autoclave Medium Pressure, Butech M/P or equivalent fitting.



HP03 Subplate with Relief Valve

D05 Subplate with Relief Valve

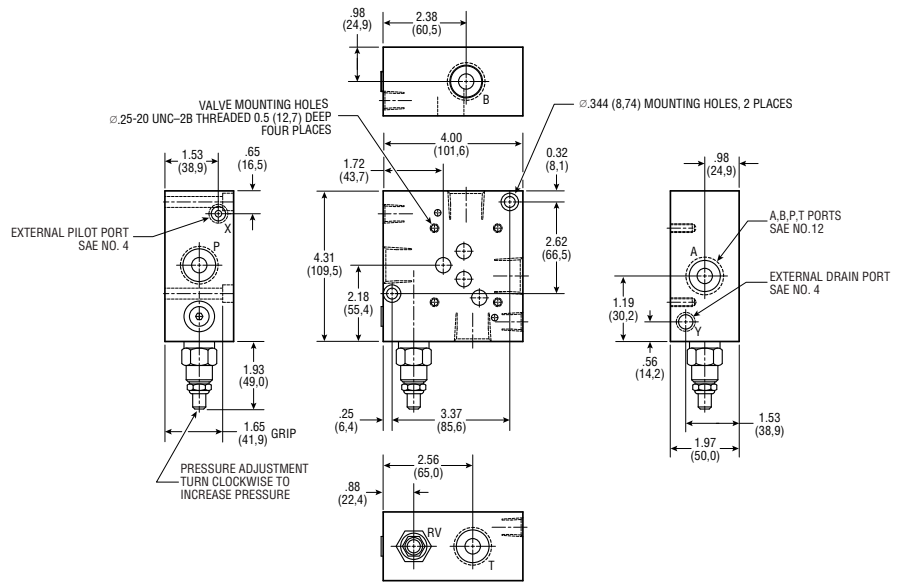
Part Number	Max Pressure	Description
SPRV-D05-SAE8	5000 PSI (345 Bar)	A,B,P,T,(P1,T1) Ports: SAE No. 8



D05 Subplate with Relief Valve

D05H Subplate with Relief Valve

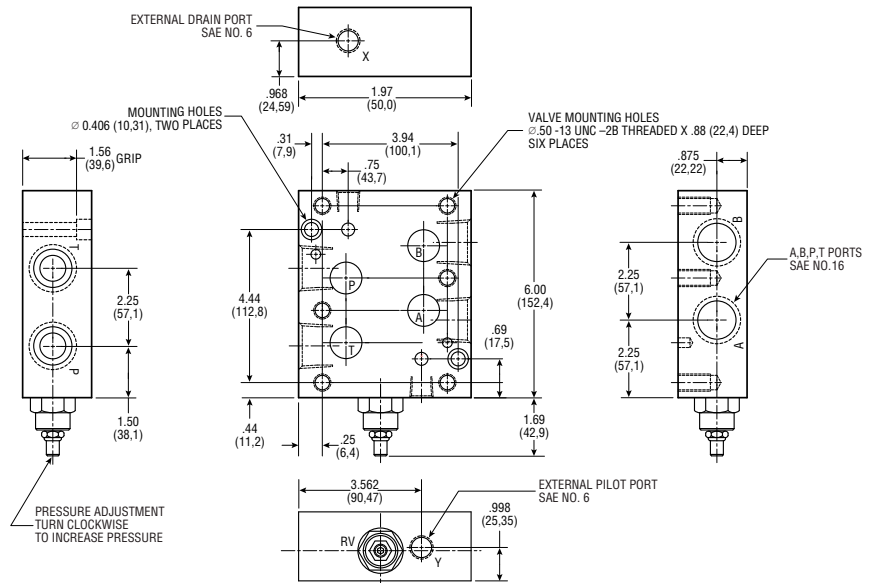
Part Number	Max Pressure	Description
SPRV-D05H-SAE12	5000 PSI (345 Bar)	A,B,P,T Ports: SAE No. 12 X & Y Ports: SAE No. 4



D05H Subplate with Relief Valve

D08 Subplate with Relief Valve

Part Number	Max Pressure	Description
SPRV-D08-SAE16	5000 PSI (345 Bar)	A,B,P,T Ports: SAE No. 16 X & Y Ports: SAE No. 6



D08 Subplate with Relief Valve

Specifications shown were in effect when printed. Since errors or omissions are possible, contact your sales representative or the sales department for the most current specifications before ordering. Dynex reserves the right to discontinue products or change designs at any time without incurring any obligation.

www.dynexhydraulics.com

USA Headquarters

770 Capitol Drive
Pewaukee, WI 53072
Tel: 1-262-691-2222
FAX: 1-262-691-0312
E-mail: sales@dynexhydraulics.com

Power Units & Systems

54 Nickerson Road
Ashland, MA 01721
Tel: 1-508-881-5110
FAX: 1-508-881-6849
E-mail: sales@ashland.dynexhydraulics.com

European Sales

Unit C5 Steel Close, Little End Road,
Eaton Socon, St Neots,
Cambs. PE19 8TT United Kingdom
Tel:+44 (0) 1480 213980 FAX:+44 (0) 1480 405662
E-mail: sales@dynexhydraulics.co.uk